



# PLANET MONITORING

## for State and Local Government

Improve the level of service to your communities with Planet's high-frequency, high-resolution monitoring solution for State and Local Government. Analyze areas of interest, detect change, and derive timely insights that improve your management of land, enforcement of law, and protection of people. Reduce the time between questions and answers with near-daily imagery, enabling impactful decision-making.

Planet's daily, global stream of high resolution satellite imagery provides an always-recent picture of the areas that matter most to your constituency. This enables better monitoring of your natural resources and urban infrastructure, greater enforcement of permitting violations, and faster response during emergency situations. Planet imagery allows for more informed decision-making with:

- More frequent imagery that can complement aerial and drone operations
- Broad coverage that captures the entire area of your jurisdiction
- Imagery that suits your needs, including 3-5 meter daily imagery in both the visible and near-infrared bands as well as high-resolution, 50 cm tasking
- Access to all imagery via web-based tools and API, in addition to Planet's ArcGIS Pro add-in that allows you to access, view, and download Planet basemaps and directly task high-resolution imagery from within your workflow



Water flows down the Oroville Dam spillway on April 9, 2019. California's officials opened the flood-control spillway at the nation's tallest dam for the first time since it was rebuilt after it crumbled during heavy rains two years ago.

### PLANET'S SOLUTION FOR STATE AND LOCAL GOVERNMENT



#### Reliable

Daily collections,  
Always-on monitoring



#### Accessible

Affordable access to  
geospatial data



#### Scalable

Broad-area coverage for  
your entire community



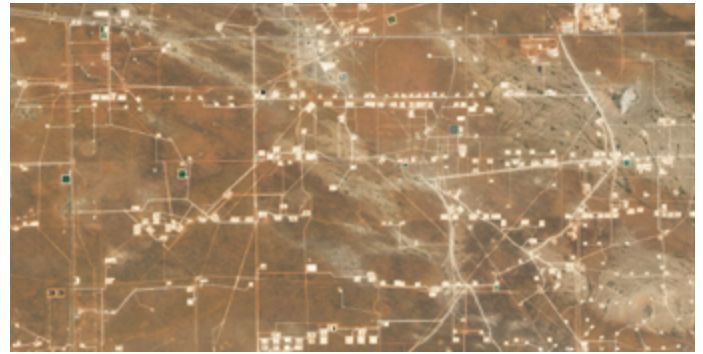
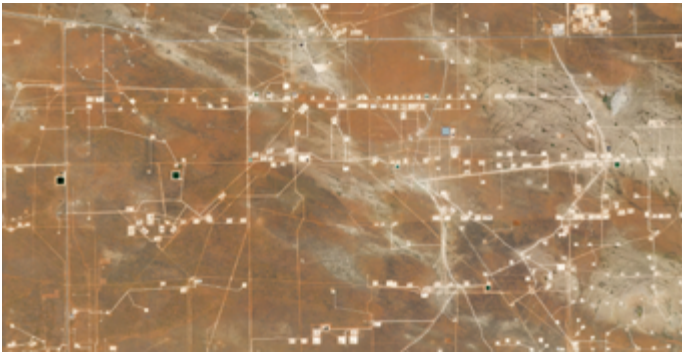
#### Efficient

Simple API for  
workflow integration



## USE CASES Strengthen your stewardship by improving:

**PERMIT ENFORCEMENT:** Detect change and collect observational truth across large, remote areas



Areas of the Permian Basin administered by the New Mexico State Land Office saw substantial oil and gas development in 2019 and early 2020. These images show dozens of well pads built near Eunice, New Mexico between April 14, 2019, and April 23, 2020. Planet's data helped the Office ensure all construction on the land they own was legally permitted.

**LAND MANAGEMENT:** Monitor natural resources and urban infrastructure at high frequency



The water shortage in India's sixth-largest city, with nearly 5 million residents, is shown here with Lake Chembarambakkam slowly drying up due to very little rain, recent scorching temperatures, and a late monsoon season. Feb 25, 2019 (left) June 15, 2019 (right)

**DISASTER PREPAREDNESS AND RESPONSE:**  
Gain greater situational awareness and respond faster to disasters

Rapid snowmelt and heavy rain led to record flooding throughout the Midwest, including in Pacific Junction, Iowa as shown here. Beyond billions of dollars in damages, many farmers' whole year's harvest was lost because they couldn't plant their corn and soy crops in wet and flooded fields. March 18, 2019



### View 50 cm SkySat Imagery

Download high-resolution sample data from diverse geographies

[www.planet.com/products/hi-res-monitoring](http://www.planet.com/products/hi-res-monitoring)

### Contact Us

Learn how Planet can help you turn data into actionable insights

[go.planet.com/getintouch](http://go.planet.com/getintouch)

### Learn More

Discover how organizations are using Planet data

[www.planet.com/markets/government](http://www.planet.com/markets/government)