



+ MONITORING CRITICAL INFRASTRUCTURE FROM SPACE

A Planet & LiveEO Use Case

RAIL RIGHT-OF-WAY • Grünheide, Germany • January 26, 2021

HIGH RESOLUTION SATELLITE IMAGERY FOR MONITORING INFRASTRUCTURE

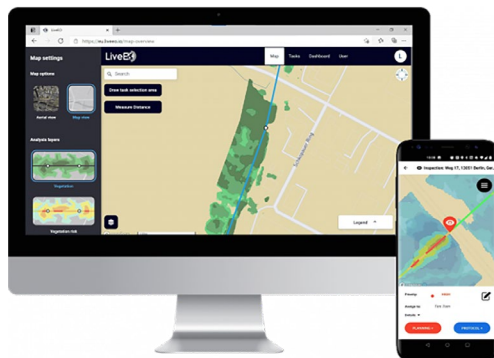
Critical infrastructure, such as rail networks, pipelines, and electric transmission lines, span millions of kilometers around the world. A critical aspect of managing this infrastructure is ensuring that the right-of-way is clear to prevent service interruptions.

Companies spend millions of dollars every year on managing vegetation and inspecting rights-of-way, yet issues continue to cause lost revenues to companies in the form of downtime, outages, and lost productivity.

TRANSFORMING IMAGERY INTO BUSINESS-READY INSIGHTS

Planet captures global, high-resolution satellite imagery that helps organizations to monitor infrastructure, mitigate risks, and respond to issues. LiveEO, an infrastructure monitoring solution provider, uses Planet's imagery to deliver automated insights for managers of rail networks, pipelines, and transmission lines. With the analytics that LiveEO provides, teams can use data to help increase safety and reliability while reducing operating expenditures.

LiveEO's web application provides easy-to-understand analytics and automated work tasks on mobile devices for the field.



About LiveEO

LiveEO improves lives on Earth with human-centered space data applications. By using artificial intelligence to derive actionable insights from satellite data to enhance business processes, LiveEO contributes to increased safety, efficiency, and sustainability of maintenance operations. LiveEO's insights make networks more resilient against the effects of climate change and minimize the need for more carbon-intensive monitoring approaches. Its international team of 100+ employees is distributed across Europe and North America, with offices in Berlin, New York, London, and Daugavpils. To learn more, visit live-eo.com and follow LiveEO on Twitter [@LiveEO_space](https://twitter.com/LiveEO_space).

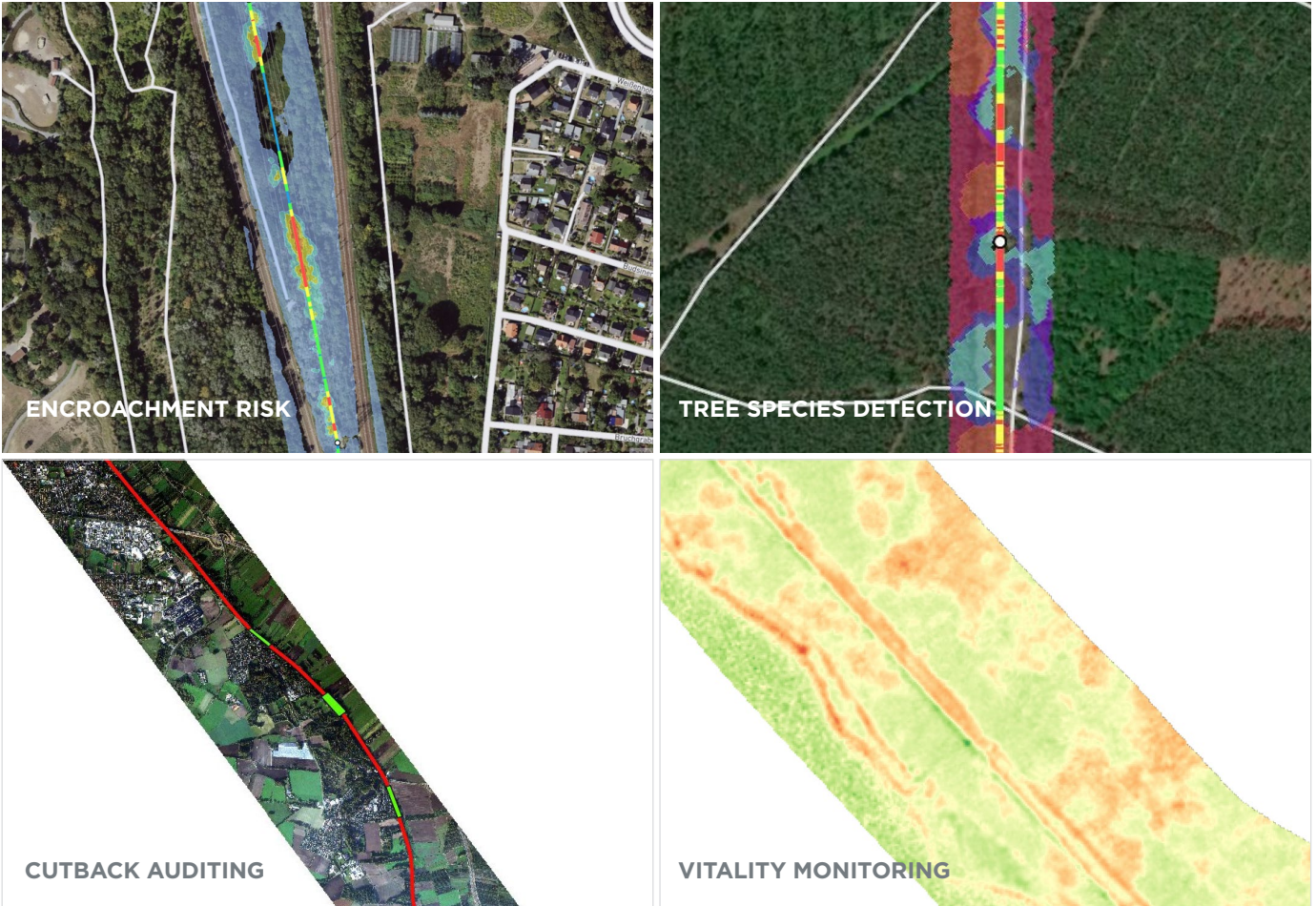
About Planet

Planet Labs PBC ("Planet") is the leading provider of global, daily satellite imagery and geospatial solutions. Planet is driven by a mission to image all of Earth's landmass every day, and make global change visible, accessible and actionable. Planet provides mission-critical data, advanced insights, and software solutions to over 800 customers, comprising the world's leading agriculture, forestry, intelligence, education and finance companies and government agencies, enabling users to simply and effectively derive unique value from satellite imagery. To learn more visit www.planet.com and follow on Twitter [@Planet](https://twitter.com/Planet).

SATELLITE-BASED VEGETATION MANAGEMENT

Examples of analytics and insights

The best analytics are not useful if the relevant stakeholders are unable to interpret them. LiveEO transforms imagery into business-ready insights. LiveEO boasts that its products are digestible for anyone, even without previous geospatial training. Risks are translated into concrete work orders and inspection tasks for decision makers and workers on the ground. Their intuitive web and mobile apps give easy access to all information in the office and in the field.



Examples of analytics and insights derived from Planet imagery courtesy of LiveEO.

Learn more about LiveEO

Visit www.live-eo.com and follow EOMAP on Twitter at [@LiveEO_space](https://twitter.com/LiveEO_space)

GET IN TOUCH

Contact Us

Reach out to talk about how Planet can help you manage energy infrastructure
go.planet.com/getintouch

Get Updates

Sign up for Planet's newsletter
go.planet.com/newsletter

Find Out More

Learn more about Planet's solutions for energy and infrastructure
go.planet.com/energy