



# PLANET SUPPORT TO CRIMINAL INVESTIGATIONS

## Detect Threats and Anticipate Change

ARIZONA MEXICO BORDER • Arizona, USA • October 10, 2020

Planet was founded with the mission to image the Earth every day and make change visible, accessible, and actionable. With over 200 satellites in orbit, Planet provides our Defense and Intelligence customers with persistent global monitoring and high-frequency revisits to inform intelligence analysis, prioritize resources, and act decisively with daily insights and global satellite data.

Planet leverages machine learning and computer vision techniques to extract critical objects and features from imagery, providing customers with deeper insights at a higher frequency. Our data can seamlessly integrate into a variety of data architectures, providing geospatial analysis in GeoJSON and GeoTIFF format, as well as time series analysis as a summary csv.

### MAKE FASTER, DATA-DRIVEN DECISIONS



#### Fill Intelligence Gaps

Use satellite imagery to augment current analysis and build pattern of life.



#### Detect Suspicious Activity

Leverage machine learning to more quickly identify change in the operational environment.



#### Improve Agent Safety

Monitor change between ports of entry to better mitigate threats.

### LEVERAGE PLANET'S DATA IN A VARIETY OF MISSION USE CASES

#### Detecting Illicit Airfields to Support Counternarcotics Operations

Planet satellite imagery can **reveal clandestine landing strips built illegally throughout protected forest reserves**. Local authorities rely on this high-frequency, high-resolution data to combat drug trafficking operations. When combined with Planet's Tip and Cue workflows with our high-resolution SkySat constellation, analysts can reduce the time to identify and evaluate key changes on the ground, providing law enforcement agencies with timely insights.



AIRSTRIP • San Andrés, Guatemala • December 2020



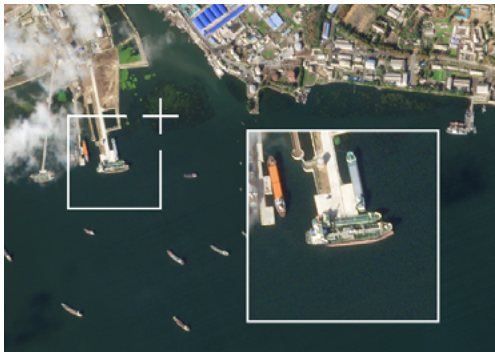
AIRSTRIP • San Andrés, Guatemala • January 2021



## Monitoring Agriculture Areas to Combat Illegal Drug Cultivation

Leveraging Planet's high-resolution SkySat imagery, Humboldt County **proactively identified and monitored cannabis cultivation operations** across the county, reducing environmental impacts, recovering costs, and assessing fines and penalties. With Planet data, the county expanded the number of citations issued in a year to over 700, and increased county revenue by \$2 million. In addition, the county was able to minimize environmental impacts from land clearing, waste water, and garbage disposal.

GROW OPERATION • Humboldt County, CA • September 14, 2018



## Ensuring Sanctions Compliance

Planet's satellite imagery can **support sanctions monitoring operations against nation states who employ evasive techniques**, such as North Korea. In collaboration with the Center for Advanced Defense Studies, Planet's high-resolution imagery was combined with ship tracking data, allowing analysts to understand how North Korea engaged in an organized criminal network outside of their borders to obtain fuel in violation of international sanctions.

NAMPO OIL TERMINAL • North Korea • October 29, 2019

## Understanding Pattern of Life to Combat Transnational Crime

Planet can **support criminal investigations related to human trafficking, counternarcotics, and transnational crime**. By leveraging our always-on constellations, analysts can detect change at scale, reducing false positives and saving time. This is particularly used in remote areas, or locations with dense foliage that are often used by drug traffickers and their facilitation networks.



RUNWAY • San Andrés, Guatemala • January 25, 2017



RUNWAY • San Andrés, Guatemala • January 25, 2017

## PLANET SOLUTIONS



### Global Monitoring, Daily Insight

With over 200 satellites in orbit, Planet is able to line-scan the Earth, imaging the entirety of Earth's landmass every day. Monitor your areas of interest, discover patterns, and deliver timely insights.



### Rapid Revisit, Global Intelligence

Equipped with near-infrared, stereo, and video capabilities, Planet's SkySat fleet can revisit any point on Earth at .50 m resolution and sub-daily revisit, higher frequency than any other commercial hi-res imagery provider.



### Identify, Detect, Analyze

Leverages machine learning to transform imagery into information feeds that detect objects and track change, providing customers better pattern of life insights to reduce risk.

## CONTACT US

Learn how Planet can help you turn data to actionable insights

[go.planet.com/getintouch](https://go.planet.com/getintouch)