



Easy, Efficient Forest Project Monitoring, Reporting, & Verification (MRV)

SOLUTION BRIEF: PLANET & LENS FOR CARBON (WITH UPSTREAM TECH & SALO SCIENCES)

Deforestation in Lojing, Malaysia • March 31, 2020.

HIGH RESOLUTION SATELLITE IMAGERY FOR REFORESTATION & FOREST CARBON MONITORING

Monitoring is critical to the credibility and value of reforestation, restoration, and forest carbon projects and has traditionally required costly, time-intensive field visits and specialized expertise. Because forest project monitoring has been difficult and expensive, most projects monitor annually at most, and often rely on sampling regimes which could miss unexpected deforestation, wildfire, or pest impacts.

LenS for Carbon provides an easy, efficient workflow for accessing and analyzing forest project attributes and generating clear and transparent reports. Salo Sciences' canopy height, canopy cover, and aboveground carbon layer, paired with quarterly Planet Basemaps and annual SkySat imagery, can be used to remotely track change and demonstrate success.

LenS for Carbon users can:

- Conduct remote site evaluation & digital MRV
- Access industry-leading forest data
- Receive alerts on potential issues
- Easily generate monitoring reports
- Leverage expert third-party analysis



About Upstream Tech

Upstream Tech is a mission-driven tech company. Upstream's software products make cutting-edge remote sensing and machine learning technology accessible and easy to use, in order to accelerate the pace, scale, and impact of environmental work around the globe. Follow on Twitter [@Upstream_Tech](#).



About Salo Sciences

Salo Sciences is a conservation-focused technology company using high-resolution satellite imagery and artificial intelligence to quantify the state of the environment and how it is changing. Founded as a mission-driven company to map forest carbon to guide investments in climate change mitigation, their first product, the California Forest Observatory, maps and quantifies the composition and structure of the state's forest and provides insights on the drivers of wildfire. Follow on Twitter [@SaloSciences](#).

About Planet

Planet Labs PBC (Planet) is a leading provider of global, daily satellite imagery and geospatial solutions. Planet is driven by a mission to image the world every day, and make change visible, accessible and actionable. Planet designs, builds, and operates the largest Earth observation fleet of imaging satellites, capturing and compiling data from over 3 million images per day. To learn more visit www.planet.com and follow us on Twitter at [@planet](#).

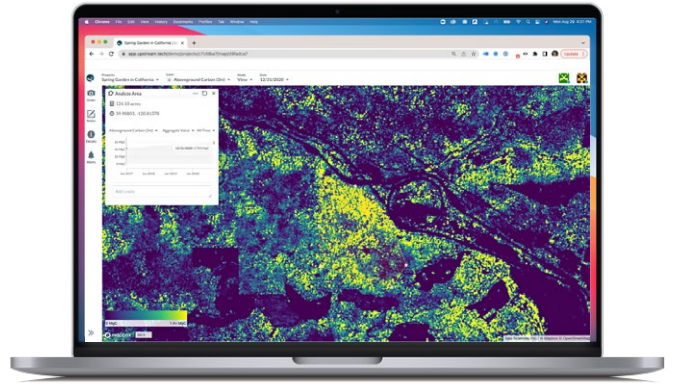
OFF-THE-SHELF REMOTE MONITORING SOLUTION

Lens for Carbon is a global monitoring solution with an intuitive interface requiring no geospatial experience to use. Salo Sciences' modeling provides data on tree growth, removals, and aboveground carbon. Paired with Planet's high-resolution data, Lens for Carbon customers have unprecedented insight across their portfolios without the need for expensive field visits or in-house remote sensing expertise.

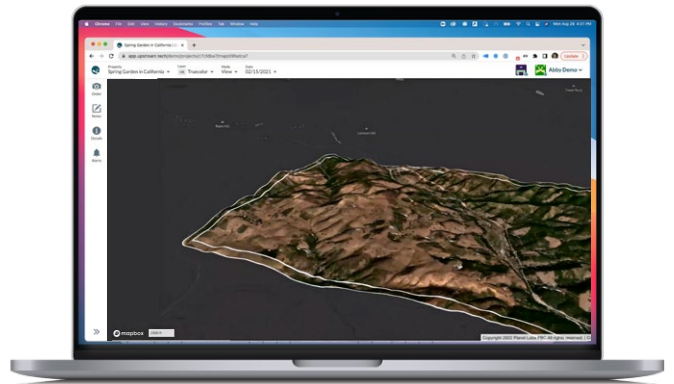
Lens for Carbon is easy to set up and use, and unlike many other offerings in this space, is ready to launch as soon as the customer is ready. Salo Sciences' forest attribute data is some of the highest resolution currently available on the market, providing highly accurate insights into conditions on the ground that you can actually "see" in the Lens platform. The addition of quarterly PlanetScope basemaps and annual SkySat captures provides a complete suite of data for quick and simple monitoring and transparent reporting on projects. With flexible user seats and permissioning tiers, Lens customers can provide direct data access in the app to project partners, funders, and other stakeholders.

Lens is used by over 150 environmental organizations who are monitoring conservation easements, restoration projects, and forestry operations. Lens is currently being used to monitor over 23 million acres of conservation and environmental projects in the U.S. and internationally. Key partners include The Nature Conservancy and the US Forest Service.

Learn more about Lens for Carbon at www.upstream.tech/use-cases/lens-for-carbon.



Quantify and visualize key project metrics using the Analyze Area tool.



Easily toggle between Truecolor imagery and analytical layers for added context.

GET IN TOUCH

Get Started

Reach out and get started with our partner solutions today
go.planet.com/getintouch

Get Updates

Sign up for Planet's newsletter
go.planet.com/newsletter

Find Out More

Learn how Planet can help you turn data into actionable insights
www.planet.com