



REAL-TIME HARVEST MONITORING

WITH SATELLITE IMAGERY

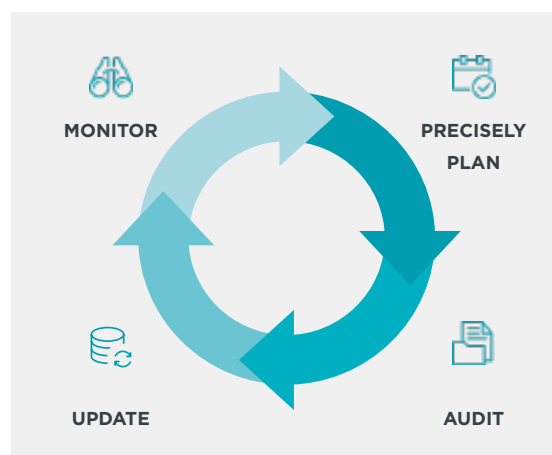
[PLANET.COM](https://planet.com)

INSIGHTS AT EVERY PHASE OF THE HARVEST

For timberland owners and forest managers, accurately monitoring the harvest depletion process is crucial for day-to-day operations, from boundary inspections, environmental assessments, to vegetation mapping.

Today's ecosystem for acquiring recent, accurate data on their forests is fragmented and cumbersome. Often it requires highly manual approaches that can introduce errors into inventory data, which has downstream effects on annual reports and financial projections.

With Planet's very high resolution, multispectral imagery, timber stakeholders can focus their efforts on analyzing and utilizing data, not just acquiring and managing it.



High-frequency, high-resolution imagery provides a persistent view of your forest operations, from planning to harvesting to reporting.

MONITOR

changes in forest cover for replanting and thinning



ADVANTAGES

Minimize manual efforts to acquire data to groundtruth and audit harvested areas immediately after clearing

Reduce operational efforts coordinating and reconciling work by forest technicians and third-party vendors

Clearly distinguish harvest boundaries with very high resolution SkySat imagery

Streamline information flows for end of quarter or monthly reports

Efficient scheduling of future planned harvesting activities

Conveniently access imagery through Planet's cloud-based platform, via and API, Planet Explorer, or through GIS integrations

PRECISELY PLAN

harvest on recent data

AUDIT

with minimal delay post depletion

UPDATE

forest inventory databases



SKYSAT • 08 JUNE 2019



SKYSAT • 19 JUNE 2019



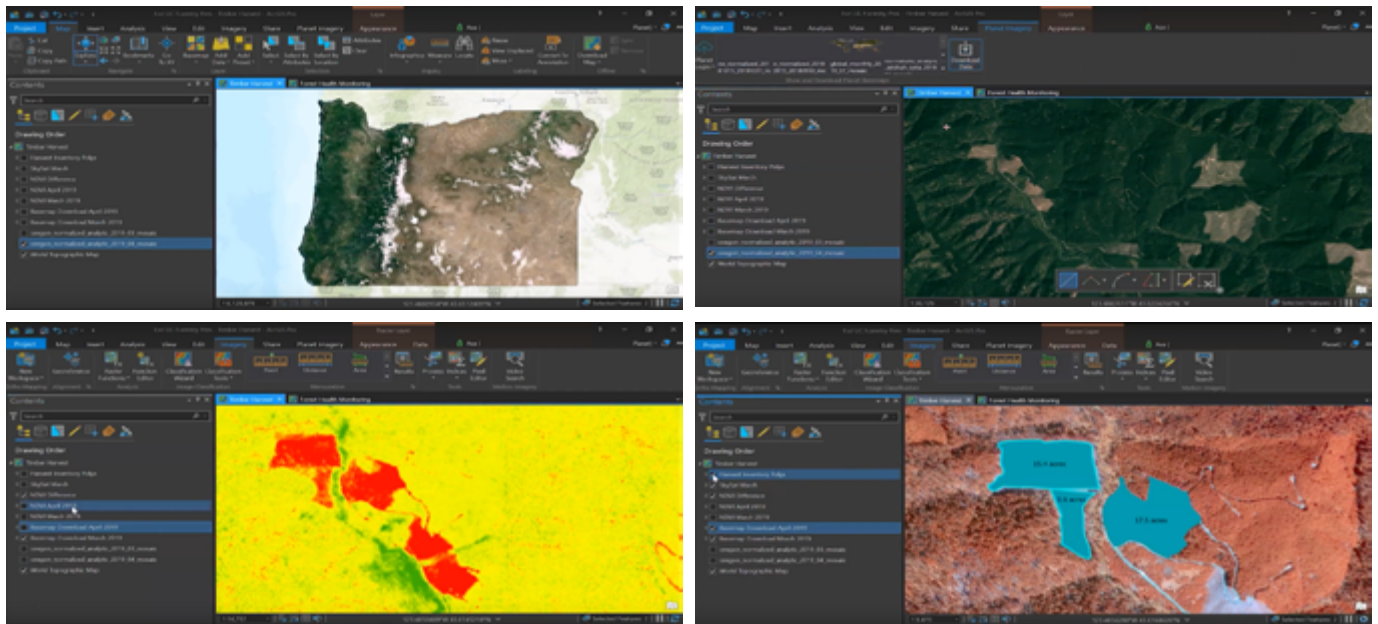
SKYSAT • 27 JUNE 2019

SEAMLESS INTEGRATION WITH GIS SOFTWARE

Leverage our integrations to bring Planet imagery into your preferred GIS software and enhance your existing workflows.

Planet directly integrates with QGIS and ArcGIS Pro, so you can easily discover, view, and download Planet imagery and complement your analysis with other geospatial data.

Learn more at planet.com/products/platform



From top left, clockwise: pull in Surface Reflectance Basemaps into ArcGIS Pro to get a broad view of land cover across an entire region or state; zoom into particular forest stands and use annotation tools to mark boundaries; perform band math, like NDVI, to distinguish boundaries; and digitize harvested areas from Planet imagery.

LET'S TALK

Contact Us

Learn how Planet can bring real-time insights to your forest management
go.planet.com/getintouch

We're Here to Help

Get answers to your technical questions
support@planet.com

Learn More

Discover use cases for Planet imagery
planet.com/markets/forestry