



PLANET ANALYTICS: BUILDING DETECTION

Identify. Detect. Analyze.

Organizations require fresh insights about buildings and infrastructure as it evolves. But manual analysis of imagery, in particular outdated imagery, is often too time-consuming and leads to decisions made with incomplete and inaccurate information.

Planet Analytics: Building Detection delivers the most consistently updated building footprints at scale, so that organizations can respond with confidence. Powered by computer vision, Building Detection extracts buildings from Planet's 4.7 m basemaps on a monthly basis and easily integrates into your workflow.

BENEFITS



Faster decision cycle

Reduces the time it takes to identify and confirm infrastructure, helping you achieve more business objectives.



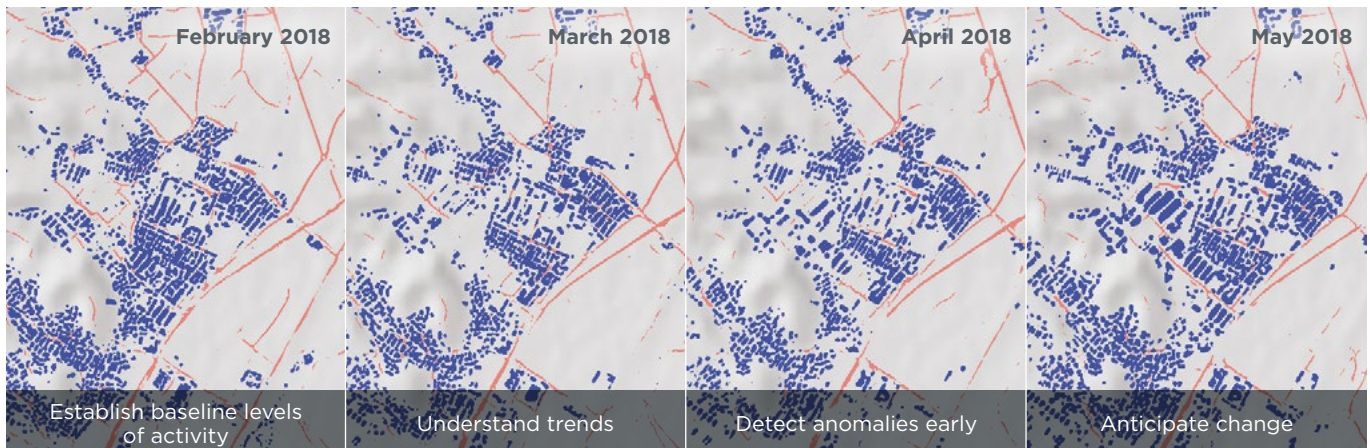
Fresh insights

Building detections are delivered every 30 days, so decisions aren't made based on old data.



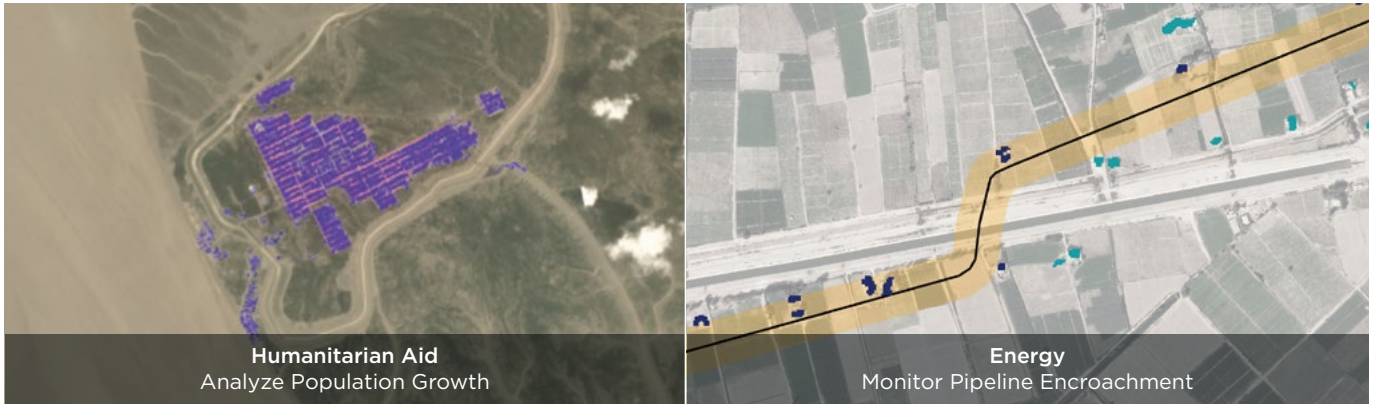
Situational awareness at scale

Planet's global imagery means you get insights across broad geographies as well as multiple locations of interest.



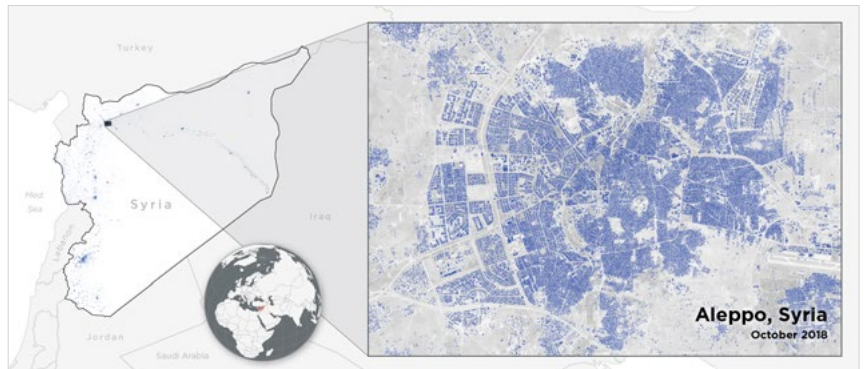
Hamhung Chemical Material Institute, Hamhung, North Korea

DIVERSE USE CASES



ANALYTICS AT GLOBAL SCALE

Planet Analytics: Building Detection can be applied globally and tailored to your areas of interest, from the continent, to national, to city-wide level, where cloud-free Basemaps are available. Reach out to our team below to learn what is possible for your areas of interest.



HOW IT WORKS



We leverage Planet Basemaps and confine it to your specific area of interest (AOI). The daily revisit rate of our satellites means we can create broad-area mosaics with minimal cloud cover on a monthly basis.



Planet Analytics uses computer vision techniques to perform advanced imagery analysis on Planet Basemaps over the specific area of interest (AOI) and extract buildings and infrastructure.



The resulting analytic layers are delivered to the customer via Planet's Analytics API and available for download as GeoTIFF. Also available via WMTS protocol for easy integration into GIS tools.

LET'S TALK

We're Here to Help

Get answers to technical questions about Planet products
support@planet.com

Contact Us

Learn how Planet can help you turn data to actionable insights
go.planet.com/getintouch

Learn More

www.planet.com